



Panache

— VILLAS —

iSmart Luxurious Villas





# About Esccon

---

Escon Infra Realtor is a prominent real estate company with a considerable footprint. The company was established by Mr. Neeraj Sharma, with the spirit of its innovation and hard core struggle the Group had formed its place very well among buyers. Our vision is not only to become the most successful real estate brand but also to become the most preferred partner of choice in the process.

Escon Group highly focuses on its quality, modernity and constant timely delivery of beautiful homes. This exception had made Escon Infra Realtor a brand new legacy for all buyers who are seeking luxury living with healthier surroundings.

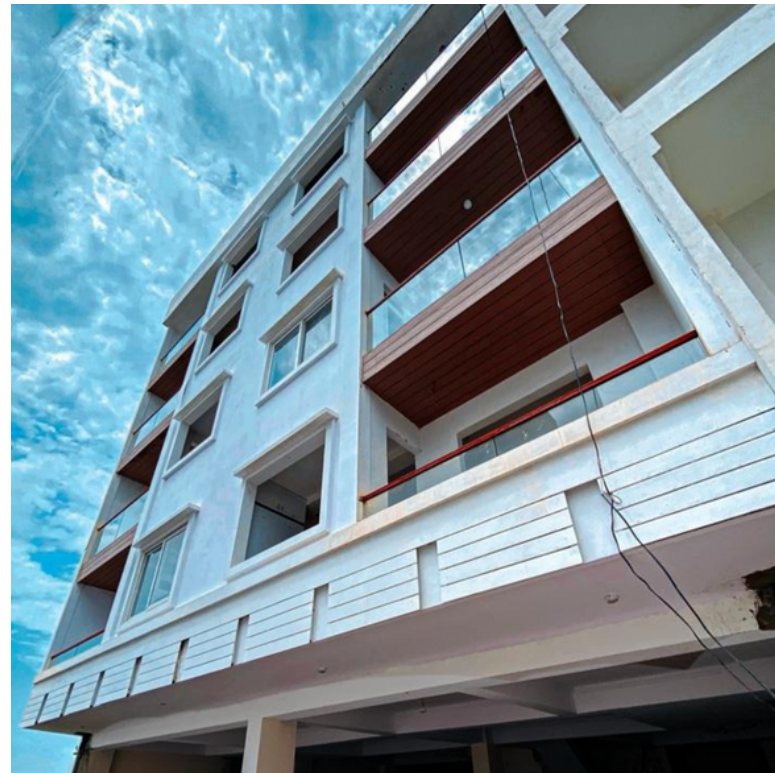
Our success is ensured with mainly two things – first the dedicated, qualified and experienced workforce and second our **QUALITY** of work.





# Our Ongoing Projects

- Escon Pride Villas
- Plots & Villas 150
- Escon Panache



# Our Delivered Projects

- Park View Villas
- Galaxy Apartment II
- Escon Homez
- Silver Homes
- Ashiyana Homes



ARTISTIC IMPRESSION





# About Panache

Escon Panache is the newly launched ultra luxurious residential property developed by Escon Group offering 4 BHK elegant villas in Greater Noida.

Mesmerize the lavish lifestyle around you, by checking out these magnificent villas. Entrall with open space environment in your own garden by giving your kids a secure future.

First in the segment of luxury villas, we are implementing smart home systems like integrated automation, security system, smart lighting, voice assistant which will offer families an enhanced comfort, convenience, security.

Embrace the serenity all around corners of development as this launch will not only amaze you but it will surely be a high impact on all buyers as this launch will be meeting all your requirements.



ARTISTIC IMPRESSION



## SMART LUXURY VILLAS PROJECT FEATURES

- Gated society.
- Secured entry and exit points.
- Boom barriers to control unauthorized entry and exit.
- 24 X 7 Hi-Tech Security.
- No overhead visible cables in the complex.
- Central green with landscaping, open gym, and temple.
- Well-lit internal roads with LED Lighting (Mix of solar based lights in case of power failure).
- Clubhouse with modern amenities like Swimming Pool, Pool table, Air-conditioned Gymnasium, Yoga / Meditation room and Party Hall.
- Video door phone (With 1 Indoor unit) with electronic lock for wicket gate in each villa individually.
- Dedicated UGT with plumping facility for water supply in the complex (Chargeable).





# DAY VIEW

ARTISTIC IMPRESSION





# NIGHT VIEW

ARTISTIC IMPRESSION





# Modular Kitchen



Embrace The Art of Flavor with Modular Kitchen!!





## Private Garden & Terrace Garden



Bring Nature Home with Private Garden and Terrace Garden!!



ARTISTIC IMPRESSION



# Private Pool & Sundeck



Make Swimming A Part of Your Lifestyle!!





ARTISTIC IMPRESSION



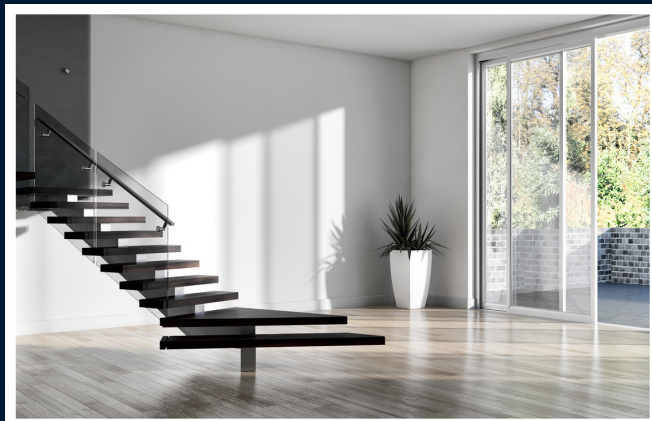
# Grand Clubhouse



Clubhouse: Live Life To Embrace Healthy Living!!



# Features



- Home Automation
- Double Height Living Room
- Private Garden
- Private Pool
- Lift Option
- Motorised Main Entry Gate\*
- 24x7 Hi-Tech Security
- Modular Kitchen
- Granite Stairs
- Terrace Garden
- Vastu Friendly
- Zero % Loading.

**Designing a Lifestyle,  
Not Just a Villa!!**

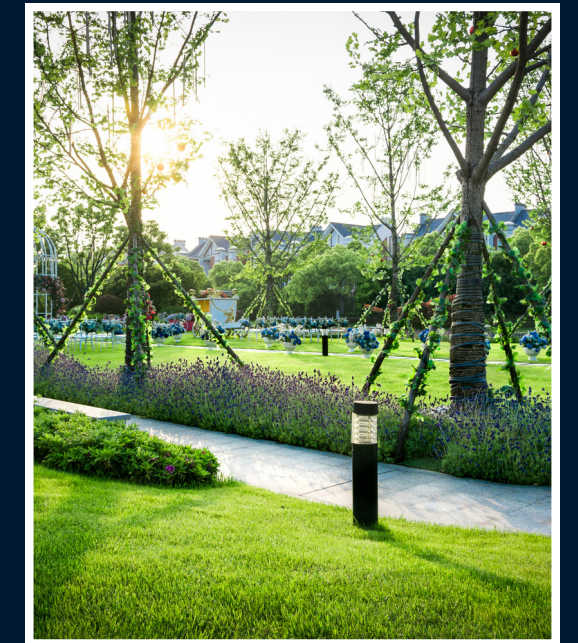


# Amenities

- Five Thousand Plus Sq. Ft. Central Park
- Ten Thousand Plus Sq. Ft. Luxury Club
- Grand Main Entrance
- Swimming Pool
- Eight Mtr. Wide Internal Road
- Open Gym
- Air Conditioned Gym
- Automatic Main Entry Gate
- 24x7 Hi-Tech Security
- Indoor Games

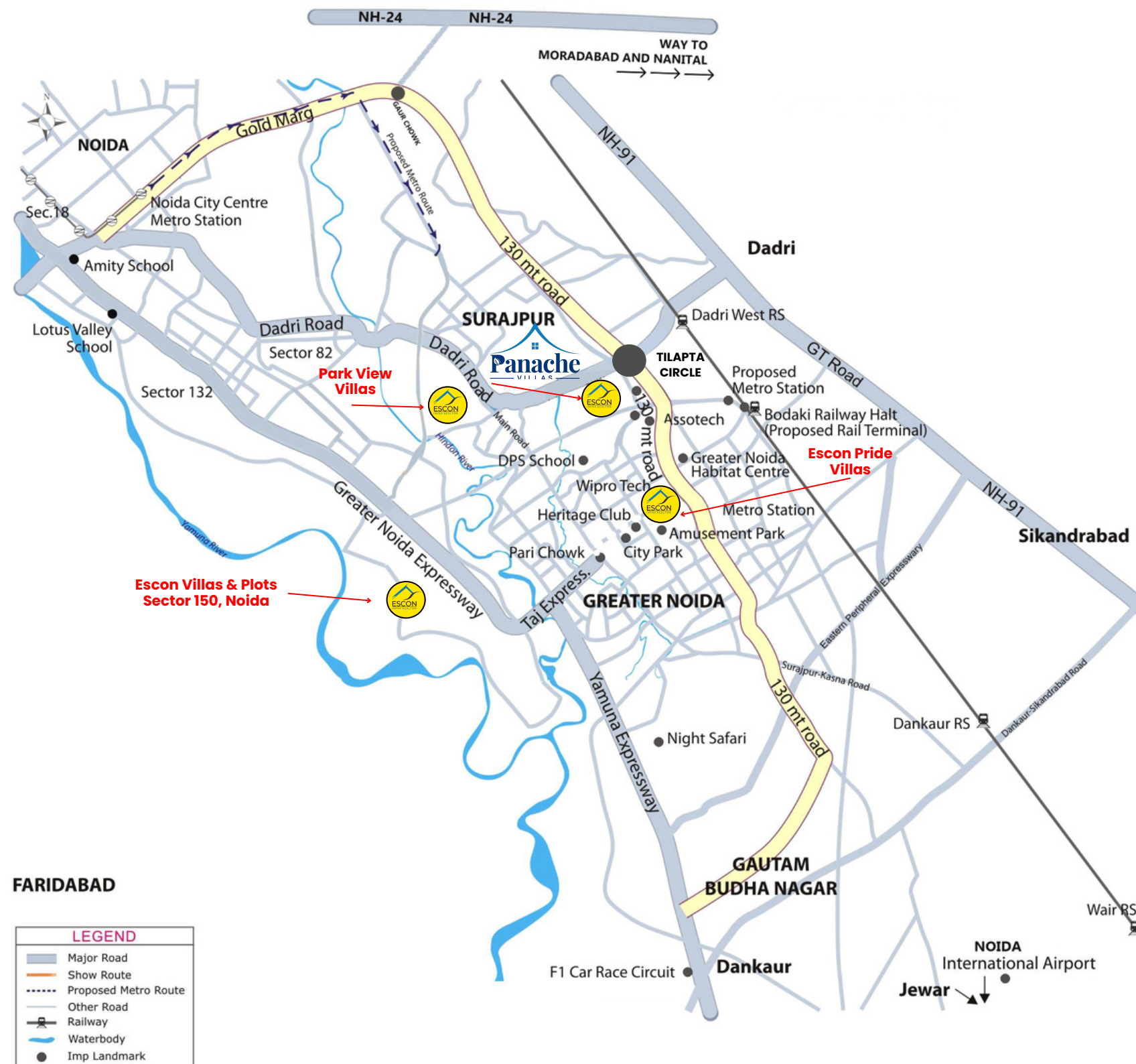
Live Like Royalty With Our Unparalleled Amenities!!

**Panache**  
VILLAS





# Location Advantages



All information, conditions are only indicative & some of them can be changed at the discretion of builder/architect/authority. These are conceptual & constitute no legal offerings.

- All Connected Expressways
- 5 Min. Premium Schools
- 10 Min. Major Hospitals
- 30 Min. Noida International Airport
- 5 Min. Greater Noida Railway Station
- 15 Min. From Gaur Chowk
- 25 Min. From DND Flyover
- 20 Min. From Noida City Center
- 10 Min. From Pari Chowk
- 30 Min. From Akshardham Temple, New Delhi

It's Essential to Evaluate the Location!!





# Panache

VILLAS

UPSIDC Site - C  
(Housing),  
Surajpur  
Greater Noida

- A** 2700 SQ. FT.
- B** 3000 SQ. FT.
- C** 3400 SQ. FT.





# TYPE - A

---

2700 SQ. FT.

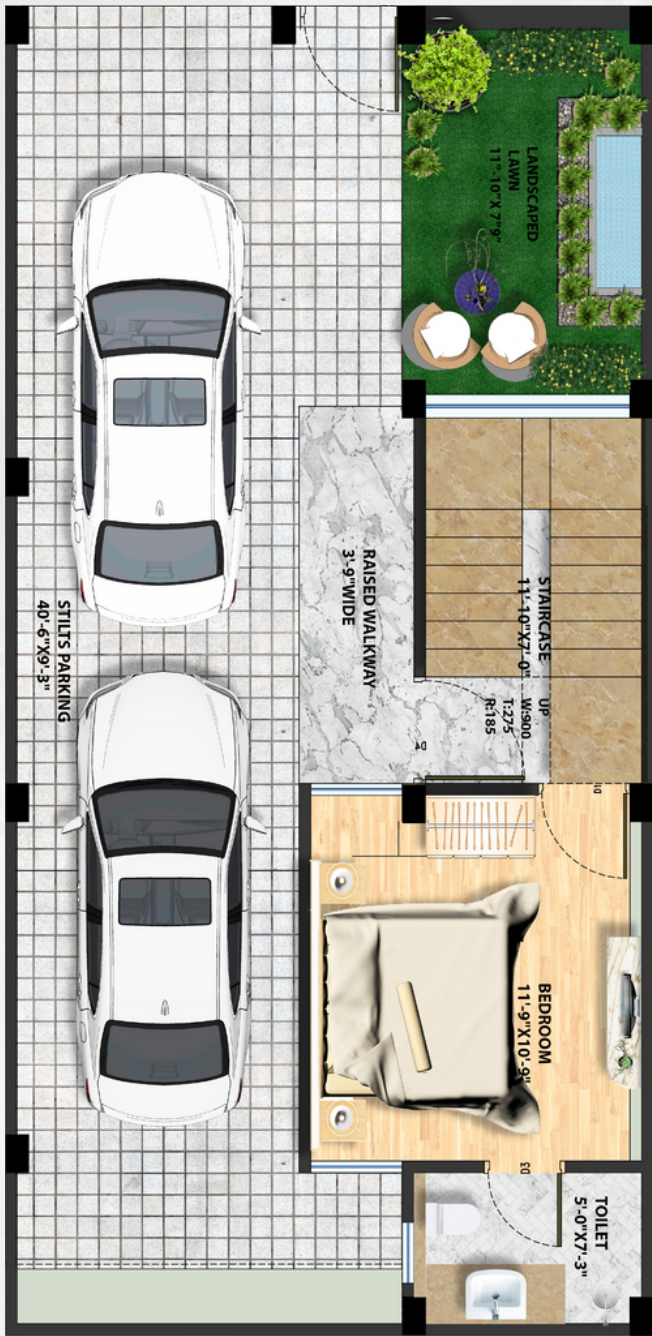
ARTISTIC IMPRESSION





# FLOOR PLAN

2700 SQ. FT.



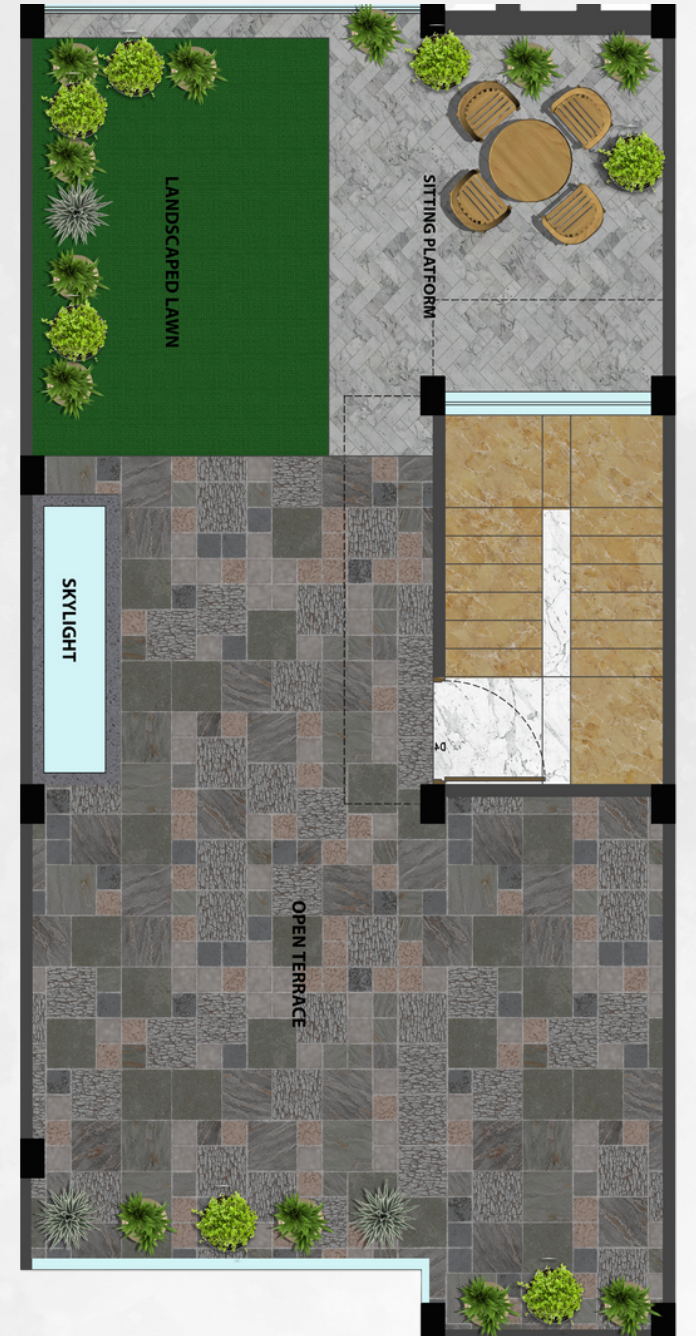
STILT FLOOR



UPPER GROUND FLOOR



FIRST FLOOR



TERRACE FLOOR



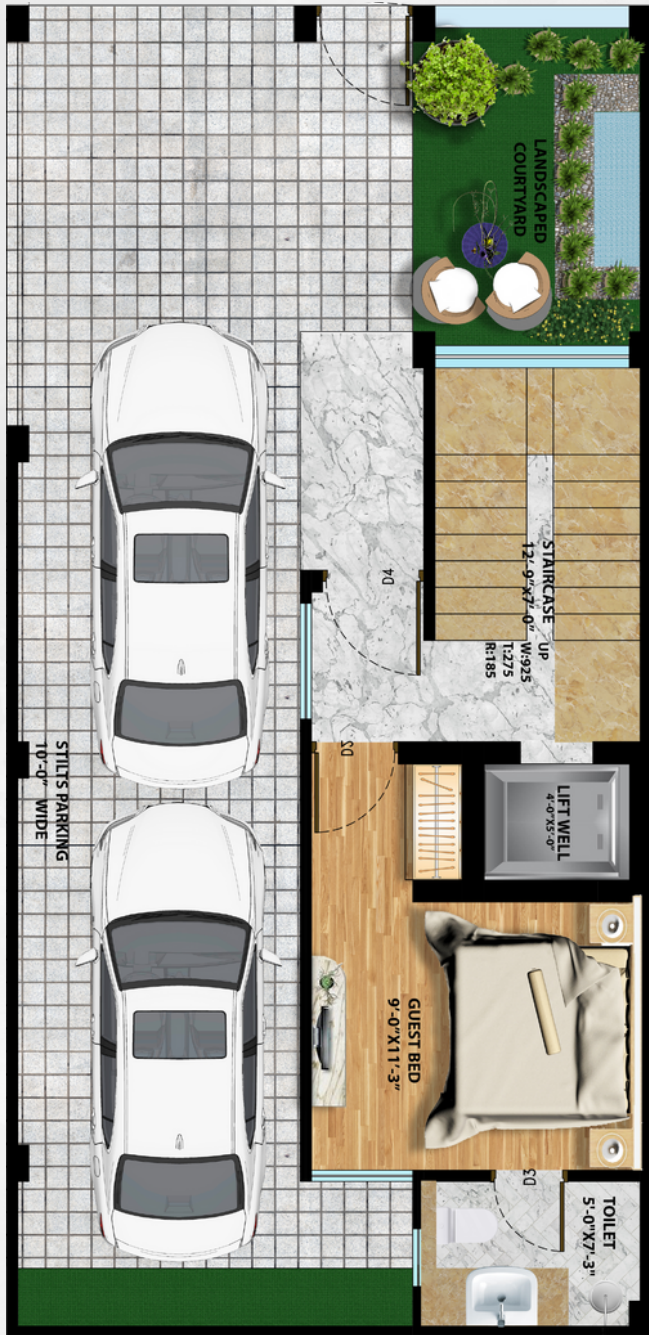
ARTISTIC IMPRESSION





# FLOOR PLAN

3000 SQ. FT.



STILT FLOOR



UPPER GROUND FLOOR



FIRST FLOOR



TERRACE FLOOR



ARTISTIC IMPRESSION





# FLOOR PLAN

3400 SQ. FT.



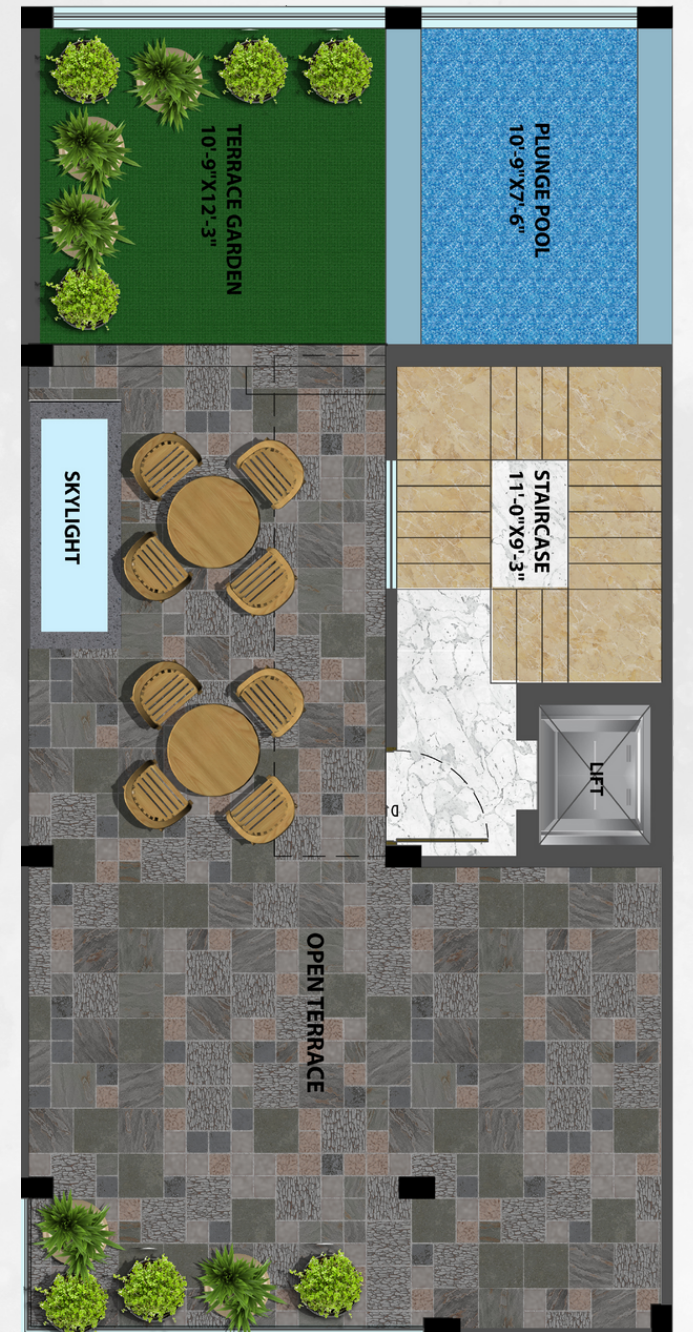
STILT FLOOR



UPPER GROUND FLOOR



FIRST FLOOR



TERRACE FLOOR



# Escon Panache iSmart Luxurious Villas



**PERFECT  
ENVIRONMENT**



**PERFECT  
SECURITY**



**PERFECT  
LOCATION**



**PERFECT  
CONNECTIVITY**

**PERFECT  
AMENITIES**



**PERFECT  
INVESTMENT**





# VILLA SPECIFICATIONS

## SUPER STRUCTURE WORK

- Water proofing treatment to be provided at DPC level & Anti termite solutions will be executed to secure the seepages and termite up-to plinth level, in all toilets and kitchen areas, Balconies and terrace. Earthquake resistant RCC framed construction, based on prevailing IS codes, designed by eminent structural consultants.
- Reinforcement and the concrete grades will be executed as per the building laws with specific design and drawings given by Architect.

## JOINERY

- Main entry door to have Teakwood frame 6"X2.25" with solid wood door 32 mm thick finished in Melamine Matt polish and Biometric Mortise lock of Lavna / Ozone / Equivalent make.
- All internal doors to bedrooms, Kitchen, Dress and toilets etc. to have Water and termite proof factory made WPC frames in section size 115x63 with CNC routed HDHMR doors, both finished in DUCO paint. Make= OZONE / GODREJ / EQUIVALENT.

## ELECTRICALS WORK

- ISI marked PVC conduits pipe in concealed conducting electrical cable lines as per electrical Norms. Make= AKG / POLYCAB / DIPLAST / EQUIVALENT make.
- Modular switches & Plates Work. Make=GM MODULAR.
- All Master bedrooms to be equipped with GM IFI PRO switches operating 04 lights and 1 fan with dimmer operated through Mobile phone App in addition to physical operation.
- Video Door phone with EM lock for wicket gate to be provided with one Indoor unit on Upper Ground floor for each villa.
- BLDC fans and exhaust fan(toilets and Kitchen)ATOMBERG / EQUIVALENT make with remote operation in all rooms.
- LED lights of reputed make for all luminaires in ceiling and false ceiling.

## FALSE CEILING

- All rooms / Toilets to have Gypsum Board false ceiling in USG BORAL / SAINT GOBAIN make as per interior designs complete with Edge profile lighting, as per design.

## PLUMBING WORK

- PVC & CPVC Pipelines Work: Using specific pipelines as per plumbing norms as per essential Needs Make= PRINCE / HINDWARE / EQUIVALENT/ POLYPACK
- All Water closets, CP fittings, Bathing area and Wash basins. Make=PLUMBER / JAQUAR / EQUIVALENT.

## FLOORING & TILING

- All living areas, entrance foyers, Dining rooms, kitchen, toilets and lobby area flooring. Make=MORBI GUJRAT.
- All Bedrooms to have Stone Polymer Composite flooring in Wooden finish, which is both waterproof and termite proof of ALSTONE / LEBEN / EQUIVALENT make.

## MODULAR KITCHEN WORK

- Modular Kitchen in 16 MM thick pre-laminated HDHMR board carcass, of ACTION TESA / EQUIVALENT make, for both under counter and Overhead cabinets to be provided with shutters in combination of High Gloss laminated finish and lacquered / frosted glass to be provided on hinges HETTICH / EBCO / EQUIVALENT make.

## FINISHING WORK

- Internal Area-Combination of Plastic Emulsion, Specific finishing and textured paint as per Design. Make= Asian Paint/ Berger/Nerolac.

## MISCELLANEOUS WORK

- All staircase, Balcony railings and Main gate in Fabricated MS, floating type design, with Granite treads, Aluminum profile and MS pipe railing as per design.
- 125 Sq yards villa to have Motorized main sliding gate and in each villa (Living room and Master bedroom) to have motorized Curtain arrangement with remote control operation of BM.
- Landscaped Terrace Garden in all villa sizes with proper waterproofing.
- Plunge pool in 125 sq yards villa.

## WOOD WORK

- Wardrobes in 16 mm Thick pre-laminated MDF board of ACTION TESA / EQUIVALENT make, with sliding shutters on HETTICH / EBCO / EQUIVALENT make hardware, in Hi Gloss finished laminates to be provided.





**ESCON**  
INFRA REALTOR

Corporate Office: C-218, Sector-63, Noida (201301)

Site Office: UPSIDC Site-C (Housing), Surajpur, Greater Noida (201306)

Email: [info@esconinfraREALTOR.com](mailto:info@esconinfraREALTOR.com)

[esconpanache.com](http://esconpanache.com) [esconinfraREALTOR.com](http://esconinfraREALTOR.com)

Project Approved & Financed by



T&C apply\*

Disclaimer: While enough care is taken by The Escon to ensure that information on the brochure is accurate and correct and the content of this brochure is for general information purposes only. The information depicted herein, for e.g. master plans, floor plans, furniture layout, illustrations, specifications, designs, dimensions, rendered views, colours, amenities and facilities etc. are subject to change without notifications as may be required by the relevant authorities or the developer's architect, and cannot form part of an owner or contract. 1sq.mtr.=10.764 sq.ft.